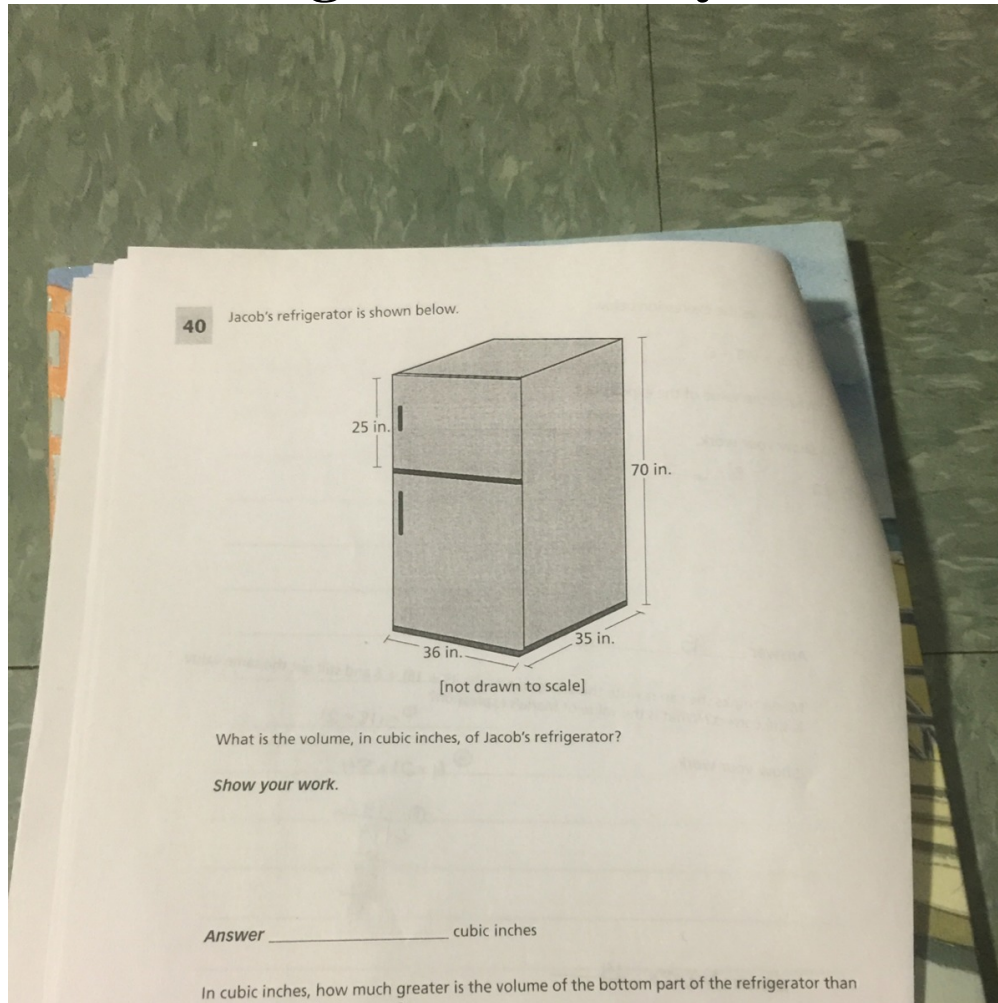


# This is 5th grade work if you needed to know



## Answer 1

Answer: To find volume multiply base times width times height.

The dimensions of the fridge is  $36 \times 35 \times 70$ .

Multiply  $36 \times 35$  to get 1260.

Multiply  $1260 \times 70$  to get 88200.

The volume of the fridge is: 88,200 cubic inches.

Hope this helps!

**Answer 2**

Answer:

**Answer:**

88,200 cubeic in.

88,200 = volume

**Step-by-step explanation:**

[MATHEMATICS](#) [MIDDLE SCHOOL](#)

1. [Home](#)
2. [this-is-5th-grade-work-if-you-needed-to-know](#)